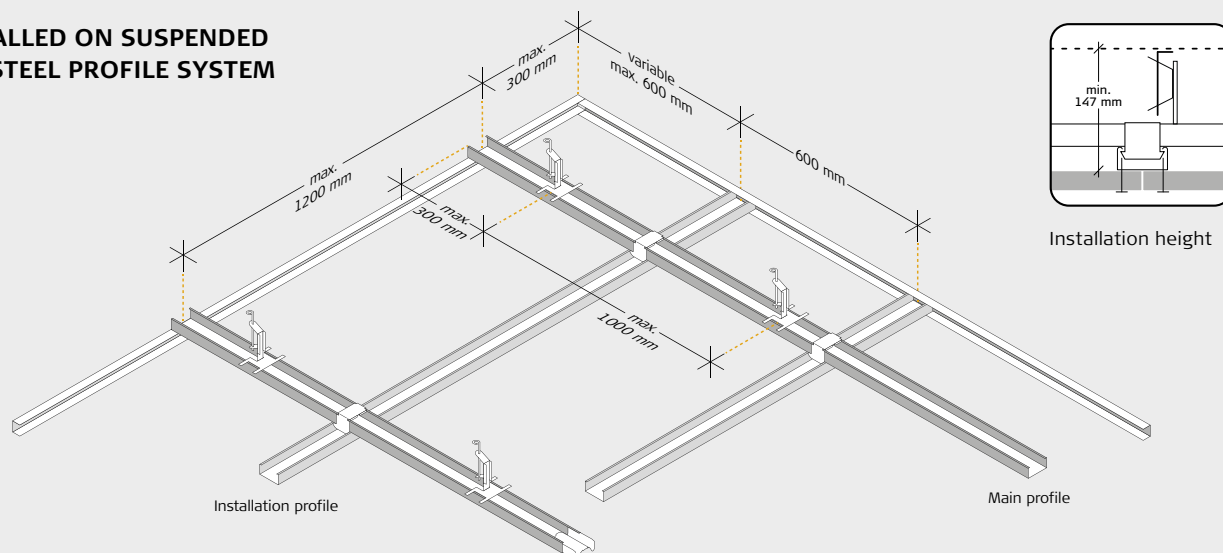


# INSTALLATION INSTRUCTIONS

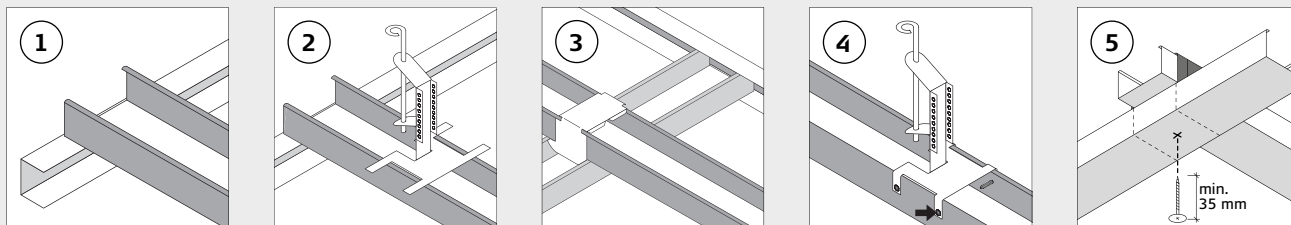
## Suspended C60 steel profile system

These instructions apply to installation of C60 steel profile system.  
Download installation instructions for all Troldekt® panel types from [www.troldekt.com](http://www.troldekt.com).

### INSTALLED ON SUSPENDED C60 STEEL PROFILE SYSTEM



### STRUCTURAL SOFFIT



**1:** Mark the horizontal ceiling at the required height on all adjoining walls. Mark the lower side of the U-profile and fix it to the wall using 6-mm dowels in pre-drilled holes. Determine and mark the anchor points for the main profiles. Always install the first quick-hanger between the wall and the first cross connector, max. 300 mm from the wall. Distribute the remaining quick-hangers with a max. spacing of 1000 mm. Assemble ring hook and quick-fit suspension bracket to the desired length and fasten securely to the construction above before further installation. Then bend the ring hook into vertical position.

**2:** Hold a main profile (C60 profile) with the opening facing upwards and click the profile over the quick-fit suspension bracket at every hanger point. Assemble the C60 profiles longitudinally using C-connectors. The main profile (C60 profile) must 'land' on the upper side of the U-profile. If possible, divide the ceiling space to allow for adjustments of min. 300 mm on both sides.

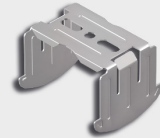
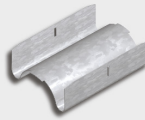
**3:** Then click the installation profiles (C60 profiles) on the main profiles using the cross connectors. Terminate the profiles in the U-profiles.

**Note:** If the lateral position of the profiles is not entirely precise, you can easily push the profile in the cross connector.

**4:** The quick-fit suspension bracket may be fixed to the main profile using screws, e.g. when installing the profile system on angled ceilings or in case of increased loads.

**5:** If the profile system is to be used for installation of panels plates with concealed KN brackets, installation and main profiles should be fixed using min. 35 mm screws under each cross connector.

## COMPONENTS



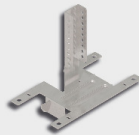
Product name	C60 profile 60×27 mm	C-connector	C-quick-fit suspension bracket	C-cross connector
Length (mm)	4000	80	100	
Quantity per pack	12 pcs.	100 pcs.	50 pcs.	100 pcs.
Approx. qty. per m <sup>2</sup>	2.5 linear m	0.6 pcs.	1.1 pcs.	1.4 pcs.



Product name	U-profile 28×27 mm	Ring hook
Length (mm)	3000	120, 250, 375, 500, 750, 1000
Quantity per pack	16 pcs.	100 pcs.
Approx. qty. per m <sup>2</sup>	According to measurement	1.1 pcs.

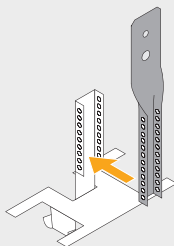
## NONIUS

To minimise wind-related pressure/suction impact, install the Troldtekt C60 profile system using fixed quick-hangers – nonius quick-hangers – instead of ring hooks.

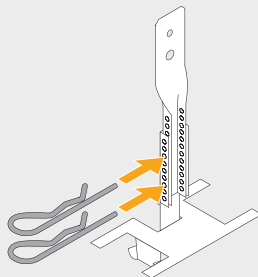


Product name	Nonius quick-fit suspension bracket	Nonius quick-hanger	Nonius split-pin
Length (mm)	100	Variable	-
Quantity per pack	50 pcs.	100 pcs.	100 pcs.
Approx. qty. per m <sup>2</sup>	1.1 pcs.	1.1 pcs.	2.2 pcs.

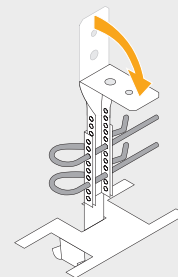
## NONIUS, ASSEMBLY INSTRUCTIONS



1: Place the nonius quick-hanger in the quick-fit suspension bracket



2: Secure the quick-hanger with nonius split-pins



3: If necessary, fold the quick-hanger upper part